



\*Actual shades may vary from the images shown

## FEATURES

- Pre-Laminated high density moisture resistant fibre board
- Luxurious High-Gloss surface finish
- Scratch resistant
- Wide range of exotic shades & modern fantasy designs
- Resistant to Shock & impact
- Manufactured as per European standards
- ALVIC Luxe offers with a practical system of vertical surface panelling
- Covered with high gloss PVC/ABS/Acrylic edge band glued with **PUR** glue

## TECHNICAL SPECIFICATIONS

- Board type - MDF (E1 grade)/HMR
- Finish - High gloss/Matt
- Frontside Finish - Melamine Paper with a layer of polyurethane and transparent primer. Also one more layer of transparent polyester finishing
- Backside Finish - Covered with melamine paper
- Shutter thickness - 18 mm
- Board density - 800 Kg/m<sup>3</sup> (avg.)
- Scratch resistance - 7.7 N
- Moisture content (%) range - 4 - 11
- Antibacterial efficacy(24 hours) - 100%
- Fire performance (classification) - D-s2, d0 (EN 13501-1)

## APPLICATIONS

- Kitchen & Wardrobes shutters
- TV units & Cabinets
- Wall Panels
- Office & Institutional furniture
- Other Home furniture - Bedrooms, Bathrooms, etc.

## ALVIC APPLICATION



\*Actual shades may vary from the images shown

# ALVIC SHADES

## Steelboard

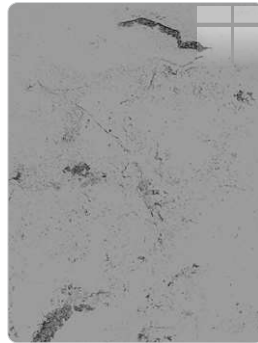


Alumino



Cooper

## Osiris



DL-233



DL-234

## Oriental

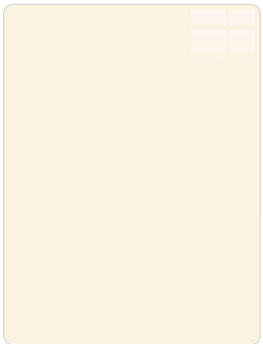


DL-219

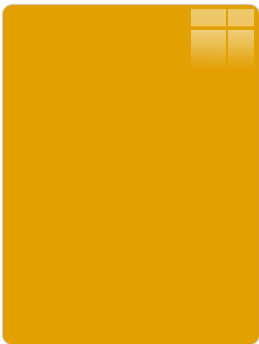


DL-220

## Solid



DL-104



DL-108

## Supermatt



DSM-102



DSM-103

## Metallo



DL-222



DL-223

## Cuzco



DL-204

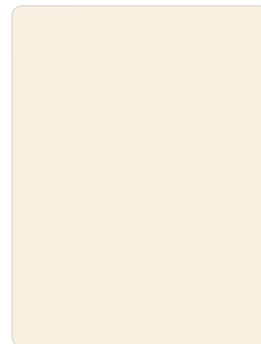


DL-217

## Pearl



DL-213

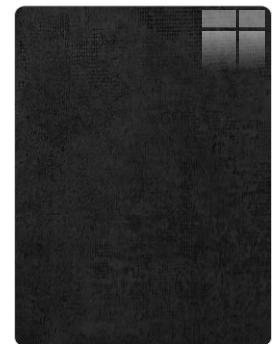


DL-229

## Melange



DL-211



DL-212

\*Actual shades may vary from the images shown

Refer Shade card or visit website for complete range of shades