



*Actual shades may vary from the images shown

FEATURES

- Brilliant High-Gloss with lacquered appearance ,ideal for use in modular kitchen
- Easy to clean because of dirt-resistance coating
- Color & UV stable for interior application
- Excellent color consistency
- High chemical resistance to ordinary chemicals and standard household cleaning products
- Scratch resistant

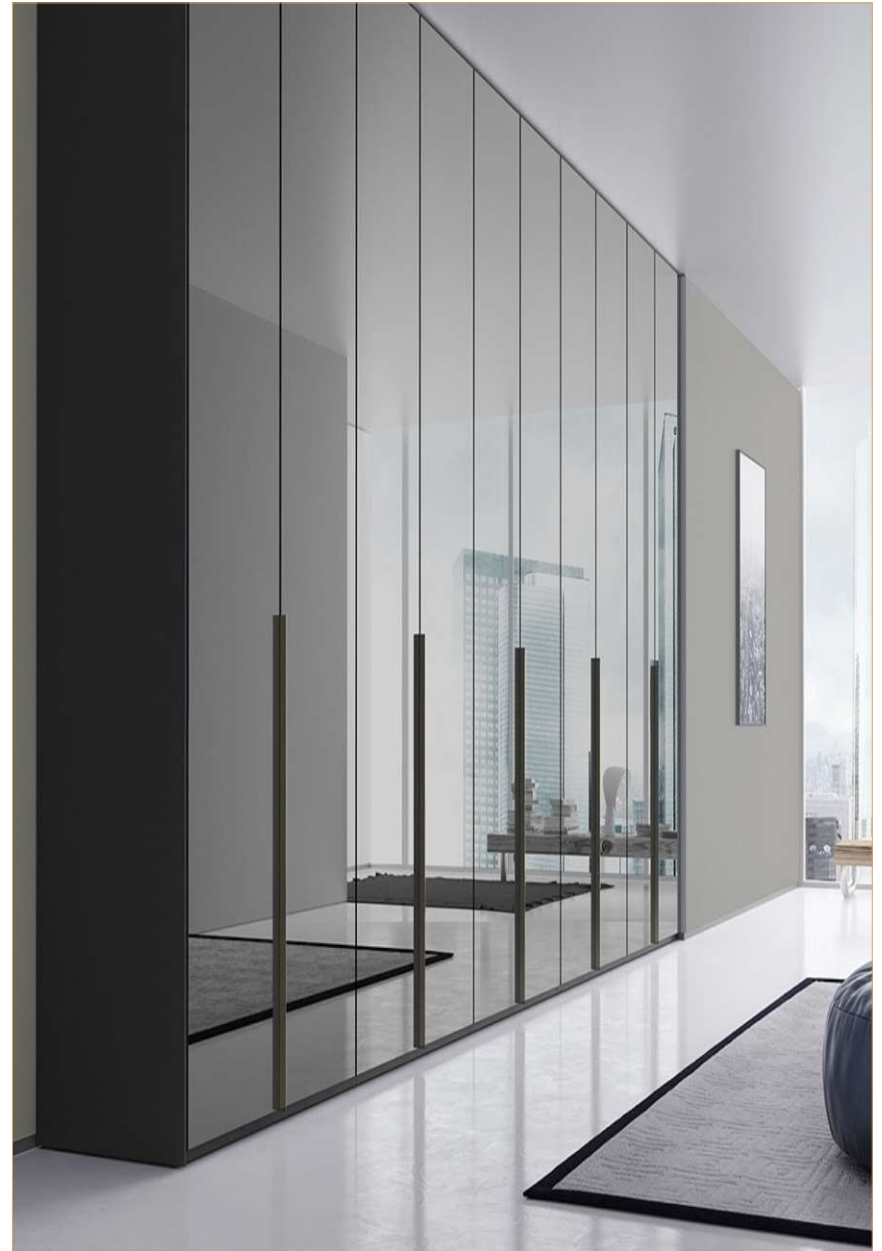
TECHNICAL SPECIFICATIONS

- Finish type - Gloss / Matt
- Top finish - Acrylic
- Inside finish - Laminate
- Laminate thickness - 0.7mm - 1mm
- Shutter thickness - 18 mm
- Shutter board type - MDF / Ply
- Edgeband - PVC/ABS/Acrylic
- Edgeband glue - Hotmelt German PUR / EVA

APPLICATIONS

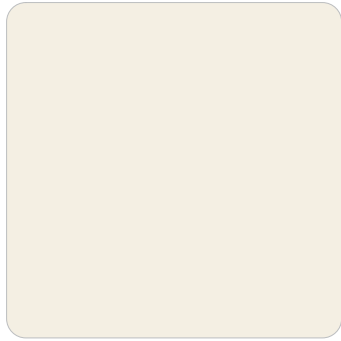
- Kitchen & Wardrobes shutters
- TV units & Cabinets
- Wall Panels
- Office & Institutional furniture
- Other Home furniture - Bedrooms, Bathrooms, etc.

ACRYLIC SHUTTERS APPLICATION



*Actual shades may vary from the images shown

SHADES-ACRYLIC FINISH SHEETS & PANELS



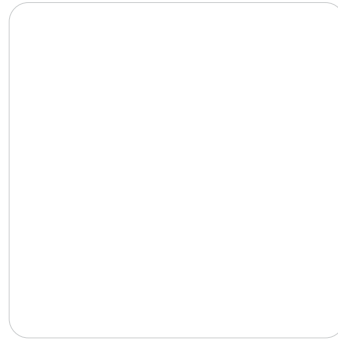
DAC - S03 (Magnolia)



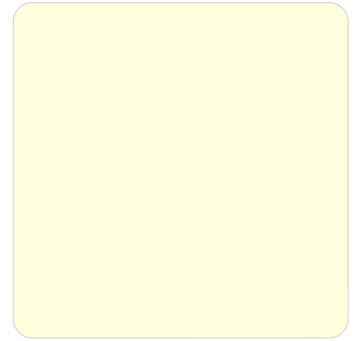
DAC - S04 (Prugna)



DAC - S05 (Vino)



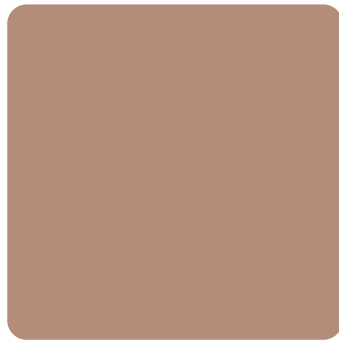
DAC-P01 (White)



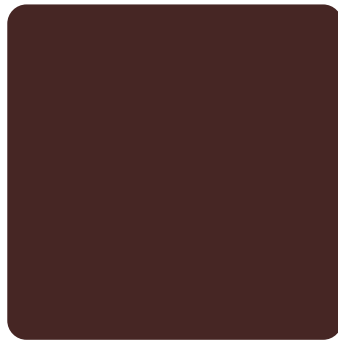
DAC-P02 (Cream)



DAC - S08 (Bigio Metallic)



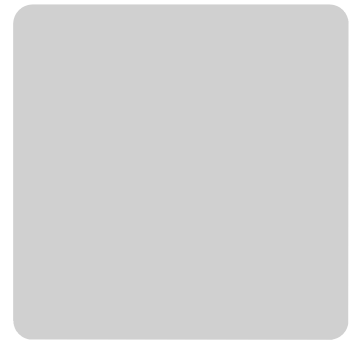
DAC - S09 (Rame Metallic)



DAC - S10 (Marrone)



DAC-P08 (Slate Grey)



DAC-P09 (Light Grey)



DAC - S14 (Cappuccino)



DAC - S11 (Notte)



DAC - S12 (Moro)



DAC-P11 (Feather Blue)



DAC-P12 (Cobalt Blue)

*Actual shades may vary from the images shown

Refer Shade card or visit website for complete range of shades